



February 8, 2022

Dear Neighbor,

Kerr McGee Oil & Gas Onshore, LP, a subsidiary of Oxy USA Inc, is preparing to submit an application for a Weld County Oil and Gas Location Assessment (WOGLA) for a project in your community. We are committed to being good neighbors by providing frequent and transparent information, seeking the community's feedback, safeguarding the environment, and protecting the health and safety of employees and communities.

Description of the project

The proposed Wardell 13-7HZ project, as described in the following pages in more detail, consists of seventeen oil and natural gas wells and a production facility. The timeline for development is based on obtaining the required permits and drilling rig availability. At this time, we estimate that drilling will start sometime between March and May 2023. However, we commit to keeping you updated throughout the permitting process and providing a detailed timeline before beginning construction. You can find project updates at oxycoloradostakeholder.com/project-updates.

Standard practices and mitigation strategies

Our standard practices align with the guidelines of the Colorado Oil and Gas Conservation Commission (COGCC), the Colorado Department of Public Health and Environment, and Weld County. In addition, we carefully planned the development and mitigation techniques for this location to ensure the temporary impacts are minimized as much as possible.

Our team members will continue to work diligently to plan construction and operations with you in mind. We welcome your feedback and can be contacted at any time for questions and comments by email, phone, or mail. In addition, we will consider all reasonable mitigation measures proposed to minimize adverse impacts of the proposed oil and gas location.

Next steps

This project must undergo a comprehensive permitting process at both the local and state level. We will keep our website updated, and you will be notified by mail at many steps throughout the process. Please reach out to us or Weld County to discuss this project or to set up a meeting. We look forward to working with you.

Oxy Stakeholder Relations

1099 18th Street, Suite 700

Denver, CO 80202

866.248.9577

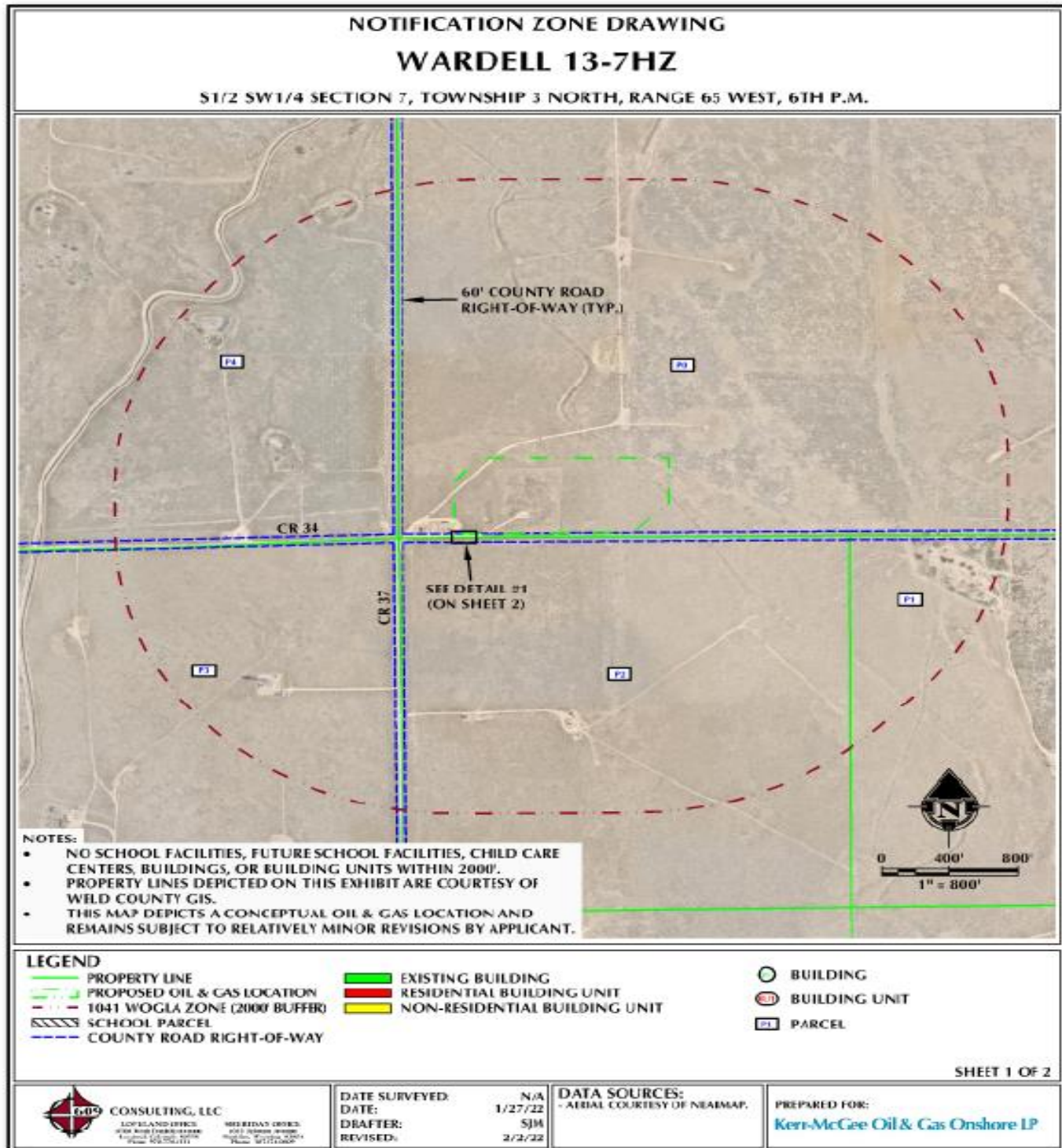
ColoradoStakeholder@oxy.com

www.OxyColoradoStakeholder.com

New Energy Development



Project Location



Pad Name	Parcel #	Location	Disturbed Acreage
Wardell 13-7HZ	121307000006	S1/2 SW1/4 SECTION 7, TOWNSHIP 3 NORTH, RANGE 65 WEST, 6 TH P.M.	16.18 Acres (During development)

New Energy Development



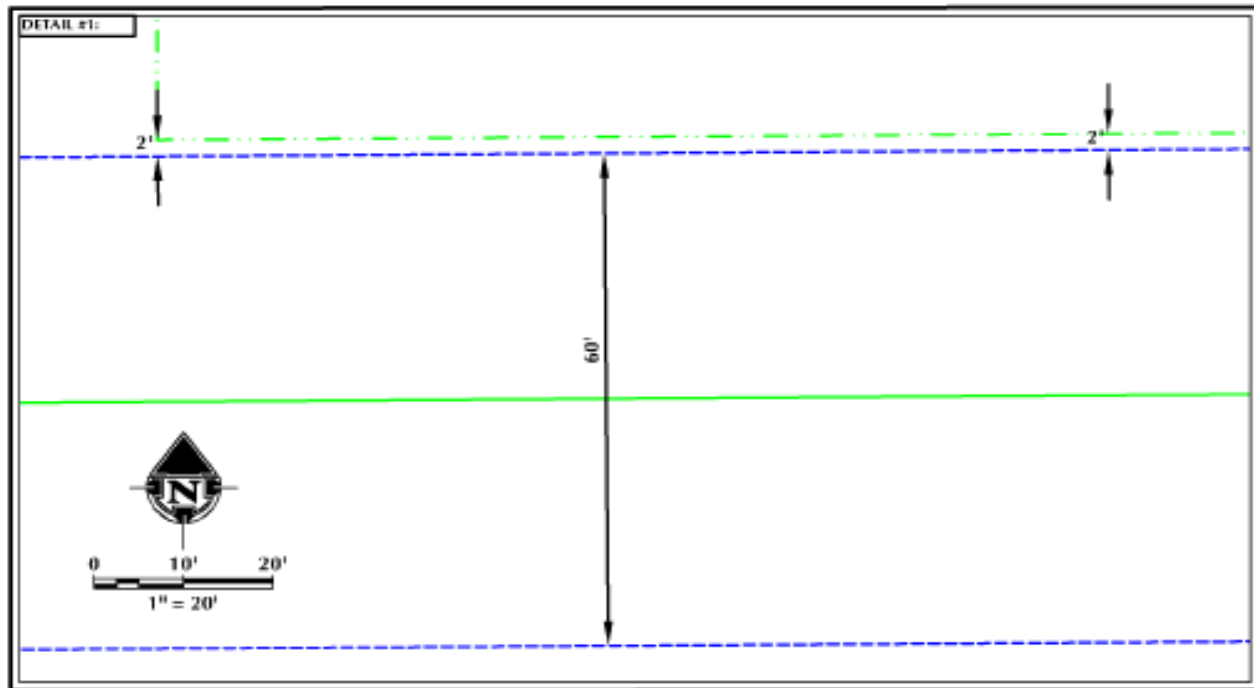
Project Location

NOTIFICATION ZONE DRAWING

WARDELL 13-7HZ

51/2 SW1/4 SECTION 7, TOWNSHIP 3 NORTH, RANGE 65 WEST, 6TH P.M.

ID	BUILDING UNIT NUMBER	BUILDING UNIT DISTANCE	BUILDING NUMBER	BUILDING DISTANCE	PARCEL #	OWNER	MAILING ADDRESS	MAIL CITY	MAIL STATE	MAIL ZIP
P0	-	-	-	-	12110700006	ROY T WARDELL LIVING TRUST	16512 ESSEX RD N	PLATTEVILLE	CO	806519317
P1	-	-	-	-	12111000013	ROY T WARDELL LIVING TRUST	16512 ESSEX RD N	PLATTEVILLE	CO	806519317
P2	-	-	-	-	12111000001	ROY T WARDELL LIVING TRUST	16512 ESSEX RD N	PLATTEVILLE	CO	806519317
P3	-	-	-	-	12111300027	USA - ATTN DEPT OF TRANSPORTATION - FED AVIATN	1601 LIND AVE SW	RENTON	WA	980573356
P4	-	-	-	-	12111200006	ALUMA ENERGY LLC	245 E 54TH ST	NEW YORK	NY	108224707



LEGEND

PROPERTY LINE	EXISTING BUILDING	BUILDING
PROPOSED OIL & GAS LOCATION	RESIDENTIAL BUILDING UNIT	BUILDING UNIT
1041 WOGLA ZONE (2000' BUFFER)	NON-RESIDENTIAL BUILDING UNIT	PARCEL
SCHOOL PARCEL		
COUNTY ROAD RIGHT-OF-WAY		

SHEET 2 OF 2



CONSULTING, LLC
LOVELAND OFFICE
4700 North Poudre River Avenue
Loveland, Colorado 80538
Phone: 970.774.6334

SHERIDAN OFFICE
1200 Indiana Avenue
Sheridan, Wyoming 82801
Phone: 307.672.2600

DATE SURVEYED: N/A
DATE: 1/27/22
DRAFTER: SJM
REVISED: 2/2/22

DATA SOURCES:
- AERIAL COURTESY OF NEARMAP.

PREPARED FOR:
Kerr-McGee Oil & Gas Onshore LP

Our Commitment To You

Our Best Practices and Mitigation Measures



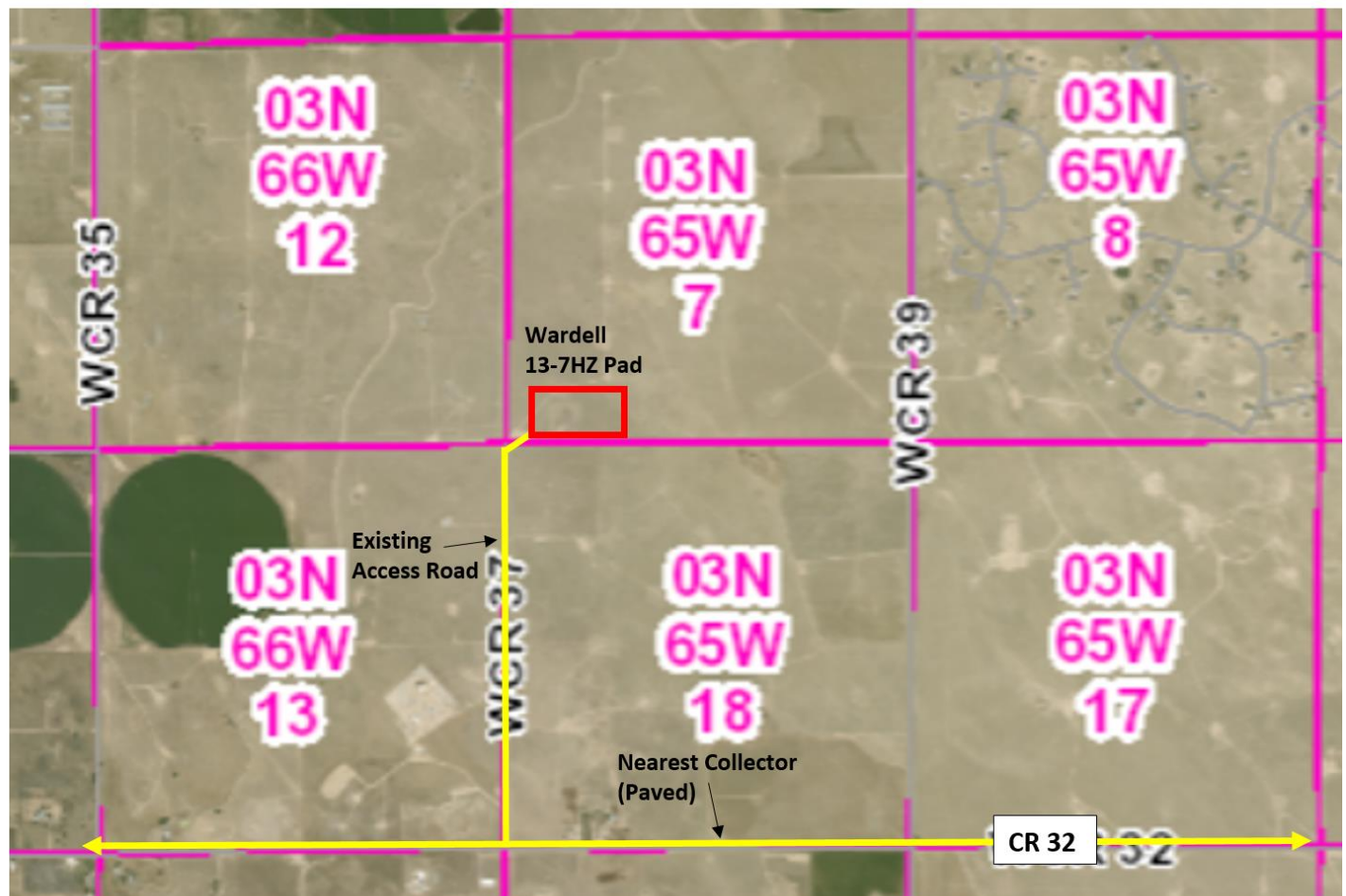
Traffic Management Plan

One part of the comprehensive permitting process is developing a traffic management plan. This includes specific routes for all traffic coming to and leaving the proposed project locations. To access the locations, drivers will utilize County Road 32. Speed limits will be reduced to 10 mph on the access road and 5 mph once vehicles reach the well pad/facility.

We reduce traffic as much as possible through oil transfer and Water-On-Demand systems. The oil produced is transported off-site through a pipeline. In addition, we transport the water used in hydraulic fracturing through our innovative Water-On-Demand pipeline system to reduce traffic further. Since its inception in 2012, this system has enabled us to eliminate 60 million miles of truck traffic from Weld County roads. Doing so has reduced emissions, dust, road wear, and inconvenience to our neighbors. This system also reduces our surface footprint by eliminating water storage tanks.

Wardell 13-7HZ Well Pad and Facility – Proposed Haul Routes

Weld County, Colorado





Phases of Energy Development

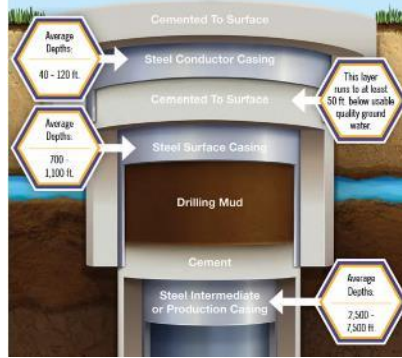
For more information, please see www.OxyColoradoStakeholder.com/Oil-and-Gas-101

1 Pad Construction 30-45 days per pad



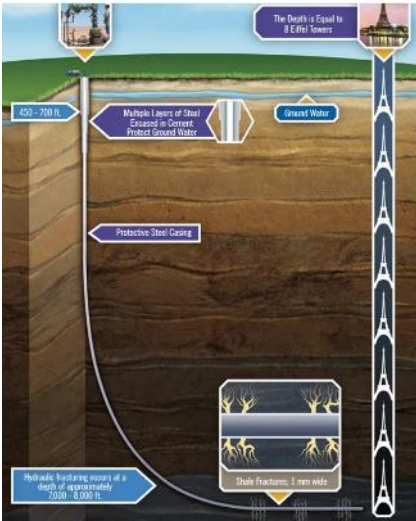
Standard construction equipment prepares the well site. A wall may be installed to reduce or minimize noise and light during development.

2 Surface Casing Set 1-2 days per well



A drilling rig begins the underground construction process by installing steel pipe and cement (surface casing) to protect groundwater. Surface casing is set at least 50' below the aquifer, which is typically about 1,000' below the surface.

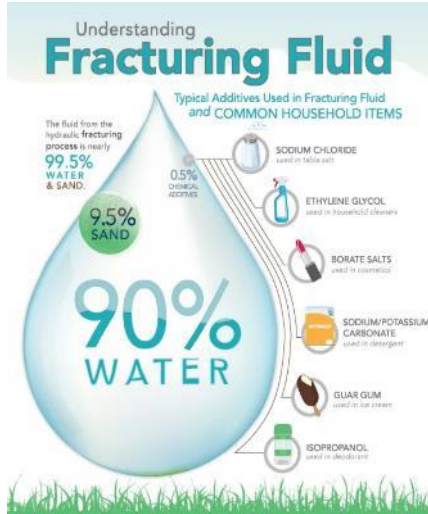
3 Horizontal Drilling 4-6 days per well



A production rig arrives and drills to a depth of 7,000 to 8,000 feet. The horizontal portion of the wellbore can extend more than two miles.

Additional layers of protective steel casing and cement are installed.

4 Well Completions: 3 Components 6-9 days per well



Hydraulic Fracturing: a safe, highly engineered technology developed in the 1940s. Fracturing fluid is pumped under high pressure down the wellbore to create hairline fractures in the rocks over a mile below the earth's surface.

Flowback: After fracturing, the wells are opened and oil and gas flows into the mobile production facility.

Well clean-out and Tubing: We clean-out the wells to remove excess sand and install the production tubing.

5 Production Facility Construction 30-45 days per facility



Production facilities are constructed adjacent to the wells to collect and separate the oil, natural gas and water that are produced. Facility production is 30-45 days of work done in stages over a period of about four months.

6 Reclaim Well Site 30 days per pad



Once development phases are complete, the pad is reclaimed to the largest extent possible to match the existing landscape. Each well will produce energy vital to the health and welfare of our communities or decades to come.

Contacts



OXY Occidental

Colorado Response Line

1.866.248.9577
ColoradoStakeholder@oxy.com



Stakeholder Relations
1099 18th Street, 7th Floor, Denver, CO 80202
Coloradostakeholder@oxy.com
www.OxyColoradoStakeholder.com

Oxy Integrated Operations Center (IOC)
970.515.1500
Real-time monitoring of wells, water tanks,
and production facilities
24 hours a day, 365 days a year



Weld County
Amanda Petzold
1301 N. 17th Ave. Greeley, CO 80631
970.400.3585 | apetzold@weldgov.com



Colorado Oil and Gas Conservation Commission
303.894.2100
www.cogcc.state.co.us