

December 2024



Dear Neighbor,

We are writing to notify you that Kerr McGee Oil & Gas Onshore, LP, an Oxy USA Inc. subsidiary, will soon begin the next phases of developing oil and natural gas wells within 2,000 feet of your home or property. In our commitment to being a good neighbor, we provide frequent and transparent information, seek community feedback, safeguard the environment, and protect the health and safety of employees and communities.

Work Activity, Location, and Schedule

Enclosed, you will find information about the phases of energy development and our well locations. Please visit our website for more information on oil and natural gas development.

Below is a summary of the planned work and the estimated schedule.

Phase	Work Activity	Estimated Start	Estimated End
1-3	Construction, Casing, and Drilling	Completed	
4	Well Completions	Mid-March 2025	Late April 2025
5	Facility Construction	Early February 2025	Mid-May 2025
6	Interim Reclamation	Early July 2025	Early September 2025
Interim Reclamation is an estimated 60-day noncontinuous period of operation.			

For up-to-date information on timing, please visit:
www.OxyColoradoStakeholder.com/project-updates

Standard Practices and Mitigation Strategies

Our standard practices align with the guidelines of the Town of Keenesburg, Weld County, the Energy & Carbon Management Commission (ECMC), and the Colorado Department of Public Health and Environment (CDPHE). We carefully planned this location's development and mitigation techniques to minimize any temporary impacts from our operations. Currently, mitigations during development include a robust traffic management plan and continuous sound and air monitoring.

Please feel free to call our Response Line at 1.866.248.9577 for additional questions, comments, or feedback.

Sincerely,

Oxy Stakeholder Relations

1099 18th Street, Suite 700 Denver, CO 80202

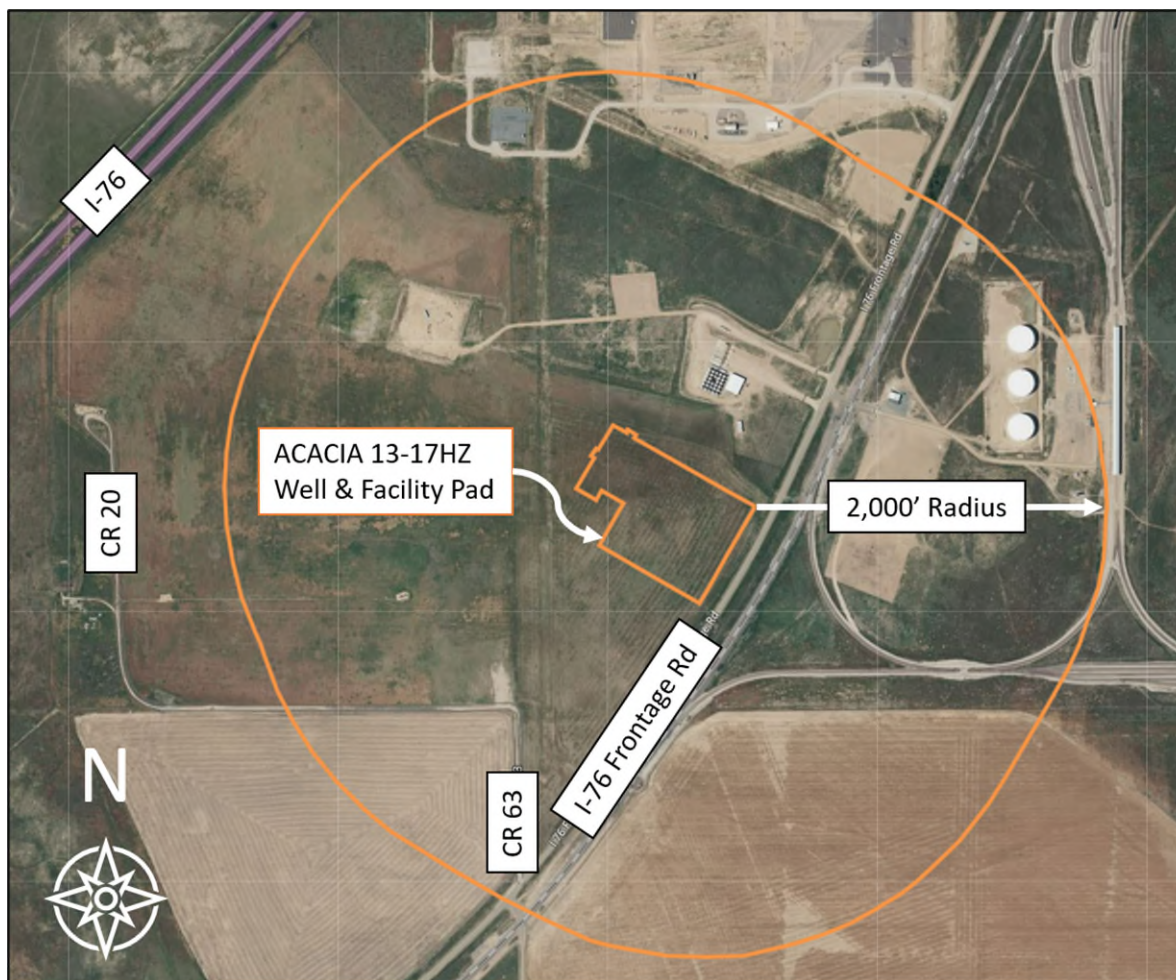
866.248.9577

ColoradoStakeholder@oxy.com

www.OxyColoradoStakeholder.com

AREA OF OPERATION

ACACIA 13-17HZ



Location:	I-76 Frontage Road & County Road 63, Weld County, CO
Parcel #:	130317300021
Cross Streets:	I-76 Frontage Road & County Road 63
Legal:	Township 2 North, Range 63 West SW/4 SW/4 Section 17 Keenesburg, Colorado
Pad Description:	ACACIA 13-17HZ, 16 wells
Weld County Permit #:	1041OGLA23-0001
ECMC Permit ID:	402958552
Weld County Oil and Gas Energy Department:	Stephanie Frederick
	1402 N. 17th Avenue, Greeley, CO
	sfrederick@weld.gov 970.400.3581
Energy & Carbon Management Commission (ECMC):	https://ecmc.state.co.us 303.894.2100

For more information on oil and natural gas development or project updates, please visit www.OxyColoradoStakeholder.com

Phases of Energy Development

For more information, please visit www.OxyColoradoStakeholder.com/oil-and-gas-101

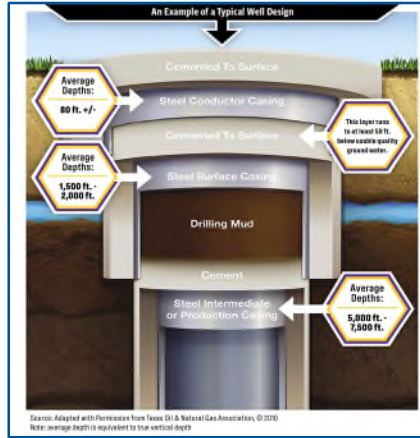


Pad Construction (30-45 days per pad)



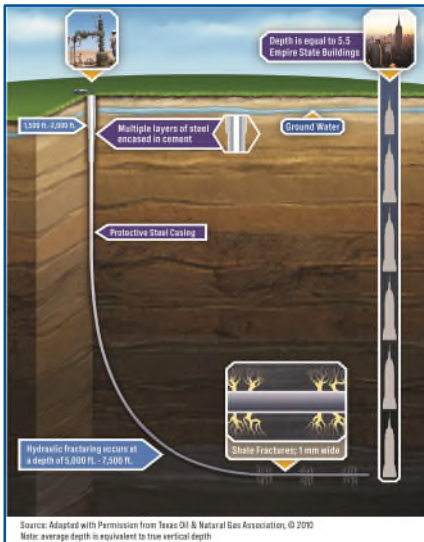
Standard construction equipment prepares the well site. A wall may be installed to reduce or minimize noise and light during development.

Surface Casing Set (1-2 days per well)



A drilling rig begins the underground construction process by installing steel pipe and cement (surface casing) to protect groundwater. Surface casing is set at least 50' below the aquifer, typically about 1,500+' below the surface.

Horizontal Drilling (4-6 days per well)



A production rig arrives and drills to a depth of 7,000 to 8,000 feet. The horizontal portion of the wellbore can extend more than two miles. Additional layers of protective steel casing and cement are installed.

Well Completions (6-9 days per well)



Hydraulic Fracturing: A safe, highly engineered technology developed in the 1940s. Fluid is pumped over a mile below the earth's surface under pressure to create hairline fractures in the rocks.

Flowback: After fracturing, the wells are opened, and oil and gas flow into the mobile production facility.

Well clean-out and Tubing: The wells are cleaned out to remove excess sand and install the production tubing.

Production Facility Construction (30-45 days per facility)



Production facilities are constructed adjacent to the wells to collect and separate the oil, natural gas, and water that are produced. Facility production is 30-45 days of work, completed in stages over about four months.

Reclaim Well Site (60 days per pad)



Once development phases are complete, the pad is reclaimed to the largest extent possible to match the existing landscape. Each well will produce energy vital to the health and welfare of our communities for decades to come.