



July 14, 2022

Greetings,

We are writing to notify you that Kerr McGee Oil & Gas Onshore, LP, a subsidiary of Oxy USA Inc., will soon begin developing oil and natural gas wells in your community. We are committed to being good neighbors by providing frequent and transparent information, safeguarding the environment, and protecting the health and safety of employees and communities.

Enclosed, you will find information about the phases of energy development and well locations. Please visit our website OxyColoradoStakeholder.com for more information on oil and natural gas development. Below is a summary of the planned work and the estimated schedule.

Phase	Work activity	Estimated start	Estimated end
1 - 3	Construction, casing, drilling	Completed	
4	Hydraulic fracturing	Mid August, 2022	Late September, 2022
5	Facility construction	In Progress	Late September 2022
6	Reclaim site	December 2022	January 2023

[For up-to-date information on timing please visit oxycoloradostakeholder.com/project-updates](http://oxycoloradostakeholder.com/project-updates)

Our standard practices align with the guidelines of the Colorado Oil and Gas Conservation Commission (COGCC) and the Colorado Department of Public Health and Environment (CDPHE). The development and mitigation techniques for this location are carefully planned to ensure temporary impacts are minimized. Mitigations during development include a robust traffic management plan, installation of sound walls and continuous air monitoring.

Sincerely,

Stakeholder Relations Team

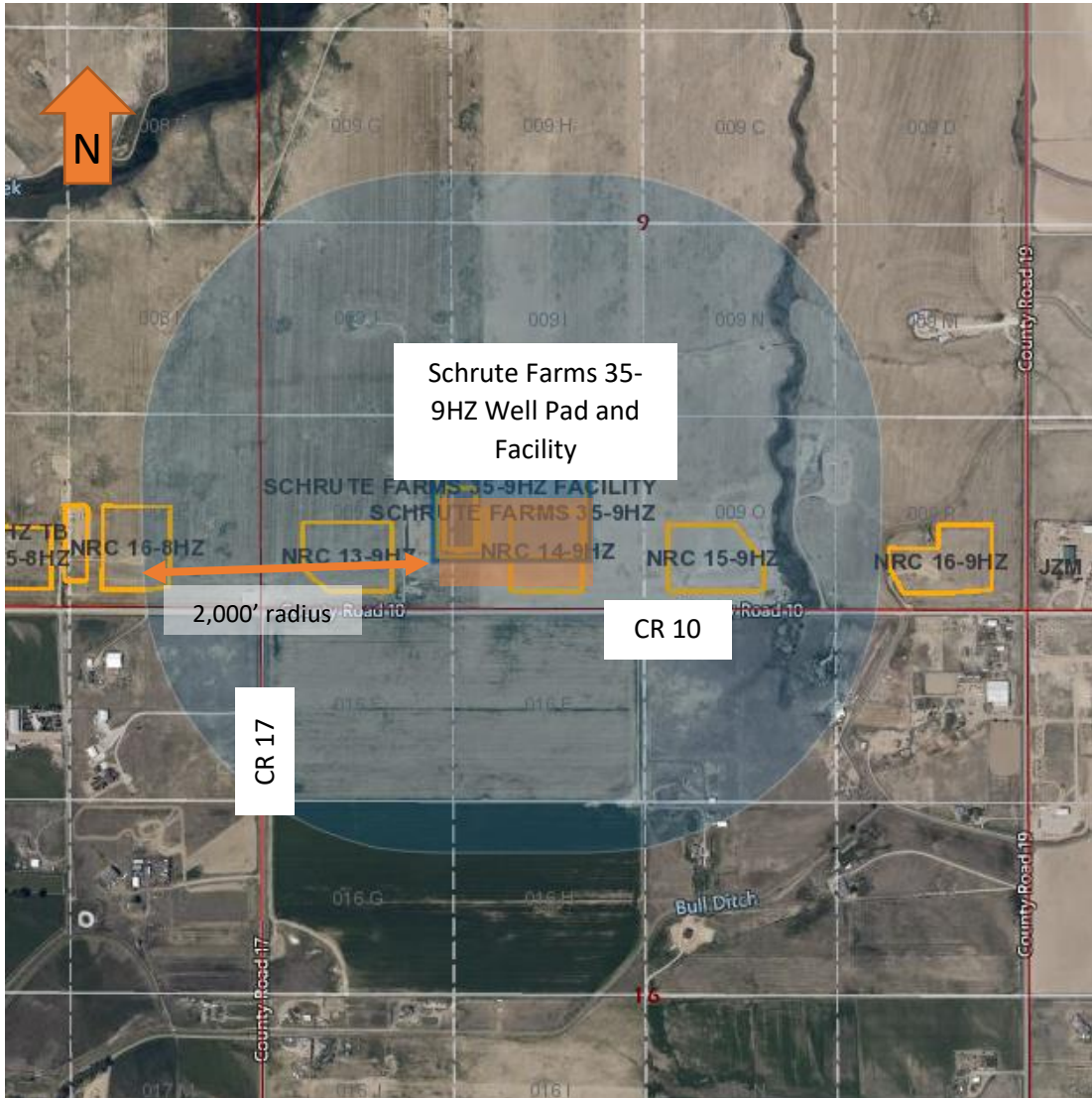
Hours: Monday - Friday, 7 a.m. - 4 p.m.

Phone: 866.248.9577

Email: ColoradoStakeholder@oxy.com

After-hours and emergency line: 970.515.1500

AREA OF OPERATION
Schrute Farms 35-9HZ



Location: 8122 CR 10 Fort Lupton, Colorado 80621
Weld County

Legal: S1/2 SW1/4 SEC 9, TWP 1N, RANGE 67W, 6TH P.M.

Parcel # - 146909000003 Updated information

Well description: Schrute Farms 35-9HZ; 12 wells;

COGCC 2A doc ID (Approved): 402448013

COGCC 2 doc IDs (Pending Approval): 40282492, 40282496, 40282497, 40282499, 40282501, 40282503, 40282505, 40282506, 40282507, 40282514, 40282518, 40282522

Weld County Oil and Gas Energy Department: 1301 N. 17th Avenue, Greeley, CO 970.400.3580
Amanda Petzold, Permit & Enforcement Specialist I, oil & Gas Energy Department; 1301 N. 17th Ave.
Greeley, Co 80631; Office 970.400.3585; cell 970.702.3705; apetzold@weldgov.com

Colorado Oil and Gas Conservation Commission: cogcc.state.co.us – 303.894.2100



Phases of Energy Development

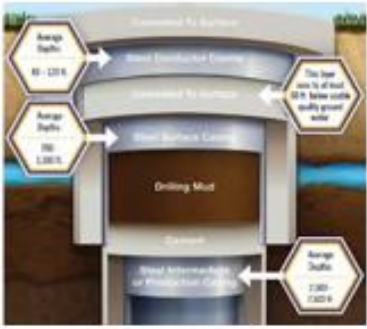
For more information, please see www.OxyColoradoStakeholder.com/Oil-and-Gas-101

1 Pad Construction 30-45 days per pad



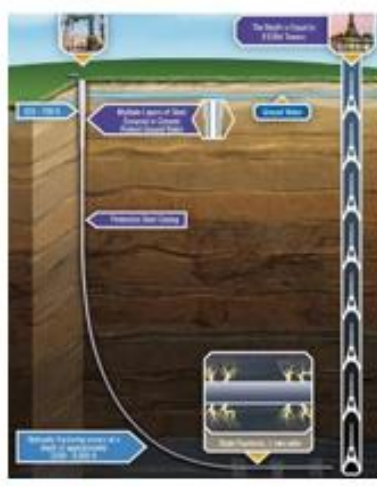
Standard construction equipment prepares the well site. A wall may be installed to reduce or minimize noise and light during development.

2 Surface Casing Set 1-2 days per well



A drilling rig begins the underground construction process by installing steel pipe and cement (surface casing) to protect groundwater. Surface casing is set at least 50 feet below the aquifer, which is typically about 1,000 feet below the surface.

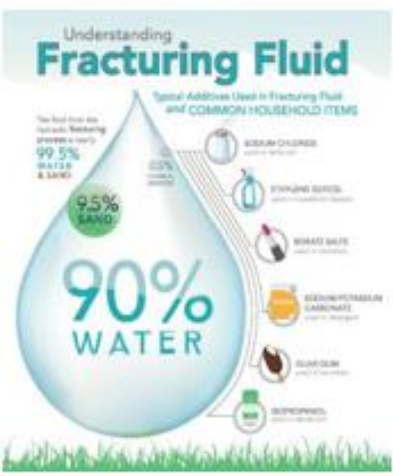
3 Horizontal Drilling 4-6 days per well



A production rig arrives and drills to a depth of 7,000 to 8,000 feet. The horizontal portion of the wellbore can extend more than two miles.

Additional layers of protective steel casing and cement are installed.

4 Well Completions: 3 Components 6-9 days per well



Hydraulic Fracturing: a safe, highly engineered technology developed in the 1940s. Fracturing fluid is pumped down the wellbore to create hairline fractures in the rocks over a mile below the earth's surface.

Flowback: After fracturing, the wells are opened and oil and gas flows into the mobile production facility.

Well clean-out and Tubing: We clean-out the wells to remove excess sand and install the production tubing.

5 Production Facility Construction 30-45 days per facility



Production facilities are constructed adjacent to the wells to collect and separate the oil, natural gas and water that are produced. Facility construction is 30-45 days of work done in stages over a period of about four months.

6 Reclaim Well Site 30 days per pad



Once development phases are complete, the pad is reclaimed to the largest extent possible to match the existing landscape. Each well will produce energy vital to the health and welfare of our communities or decades to come.