



March 7, 2023

Dear Neighbor,

We are writing to notify you that Kerr McGee Oil & Gas Onshore, LP, a subsidiary of Oxy USA Inc., will soon begin the next phase of developing oil and natural gas wells within 1 mile of your home or property. We are committed to being good neighbors by providing frequent and transparent information, safeguarding the environment, and protecting the health and safety of the communities we live and work in.

Work activity, location, and schedule

Enclosed, you will find information about the phases of energy development and well locations. Please visit our website OxyColoradoStakeholder.com for more information on oil and natural gas development. Below is a summary of the planned work and the estimated schedule.

Phase	Work activity	Estimated start	Estimated end
1 - 3	Construction, casing, and drilling	Completed	
4	Well completions	April 2023	Mid August 2023
5	Facility construction	May 2023	Mid July 2023
6	Reclamation	Late July 2023	Late October 2023

[For up-to-date information on timing, please visit oxycoloradostakeholder.com/project-updates](https://OxyColoradoStakeholder.com/project-updates)

Standard practices and mitigation strategies

Our standard practices align with the guidelines of the Colorado Oil and Gas Conservation Commission (COGCC) and the Colorado Department of Public Health and Environment. In addition, we carefully planned the development and mitigation techniques for this location to ensure the temporary impacts are minimized as much as possible. Mitigations during development include a robust traffic management plan, installation of sound walls, and continuous sound and air monitoring.

To access the most up-to-date information on current projects, please visit the Project Updates tab at [oxycoloradostakeholder.com/project-updates](https://OxyColoradoStakeholder.com/project-updates).

Sincerely,

Oxy Stakeholder Relations

Hours: Monday - Friday, 7 a.m. - 4 p.m.

Phone: 866.248.9577

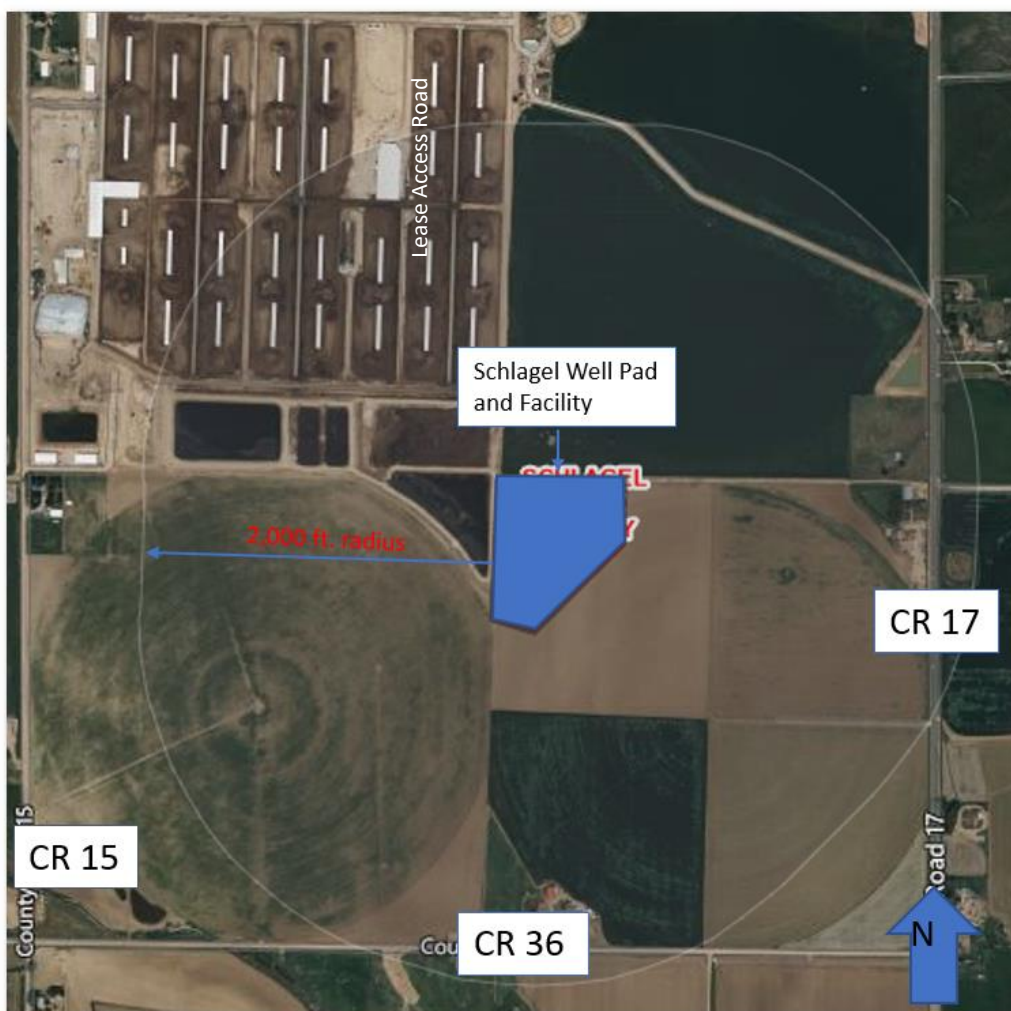
Email: ColoradoStakeholder@oxy.com

After-Hours and Emergency Line: 970.515.1500

AREA OF OPERATION



SCHLAGEL 10-5HZ



Location: Lat: 40.253930 Long: -104.912758 - Parcel # 120905000022

Cross streets: WCR 17 and WCR 36.5

Unincorporated Weld County / Or list Town/City

Legal: NWSE SECTION 5 TOWNSHIP 3 NORTH, RANGE 67 WEST, 6TH P.M

Well description: Schlager 10-5HZ, 11 wells;

Weld County Permit#: 1041WOGLA20-0062

COGCC Permit ID: 41617

Weld County Oil and Gas Energy Department: Stephanie Frederick

1402 N. 17th Avenue, Greeley, CO | sfrederick@weldgov.com | 970.400.3581

Colorado Oil and Gas Conservation Commission: cogcc.state.co.us – 303.894.2100

For more information on oil and natural Gas Development and project updates, visit www.oxycoloradostakeholder.com



Phases of Energy Development

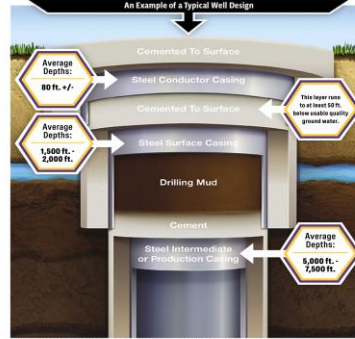
For more information, please see www.OxyColoradoStakeholder.com/Oil-and-Gas-101

1 Pad Construction 30-45 days per pad



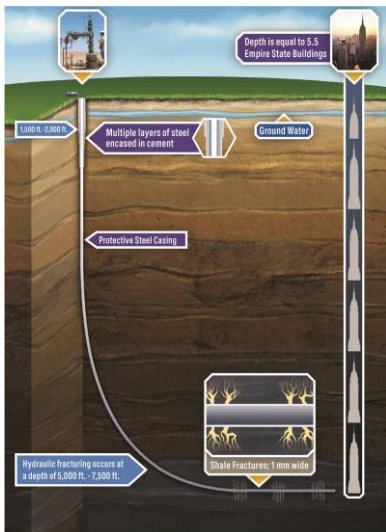
Standard construction equipment prepares the well site. A wall may be installed to reduce or minimize noise and light during development.

2 Surface Casing Set 1-2 days per well



A drilling rig begins the underground construction process by installing steel pipe and cement (surface casing) to protect groundwater. Surface casing is set at least 50' below the aquifer, which is typically about 1,000' below the surface.

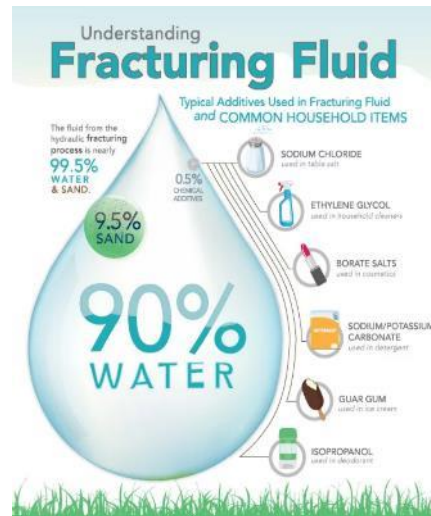
3 Horizontal Drilling 4-6 days per well



A production rig arrives and drills to a depth of 7,000 to 8,000 feet. The horizontal portion of the wellbore can extend more than two miles.

Additional layers of protective steel casing and cement are installed.

4 Well Completions: 3 Components 6-9 days per well



Hydraulic Fracturing: a safe, highly engineered technology developed in the 1940s. Fracturing fluid is pumped under high pressure down the wellbore to create hairline fractures in the rocks over a mile below the earth's surface.

Flowback: After fracturing, the wells are opened and oil and gas flows into the mobile production facility.

Well clean-out and Tubing: We clean-out the wells to remove excess sand and install the production tubing.

5 Production Facility Construction 30-45 days per facility



Production facilities are constructed adjacent to the wells to collect and separate the oil, natural gas and water that are produced. Facility production is 30-45 days of work done in stages over a period of about four months.

6 Reclaim Well Site 30 days per pad



Once development phases are complete, the pad is reclaimed to the largest extent possible to match the existing landscape. Each well will produce energy vital to the health and welfare of our communities or decades to come.