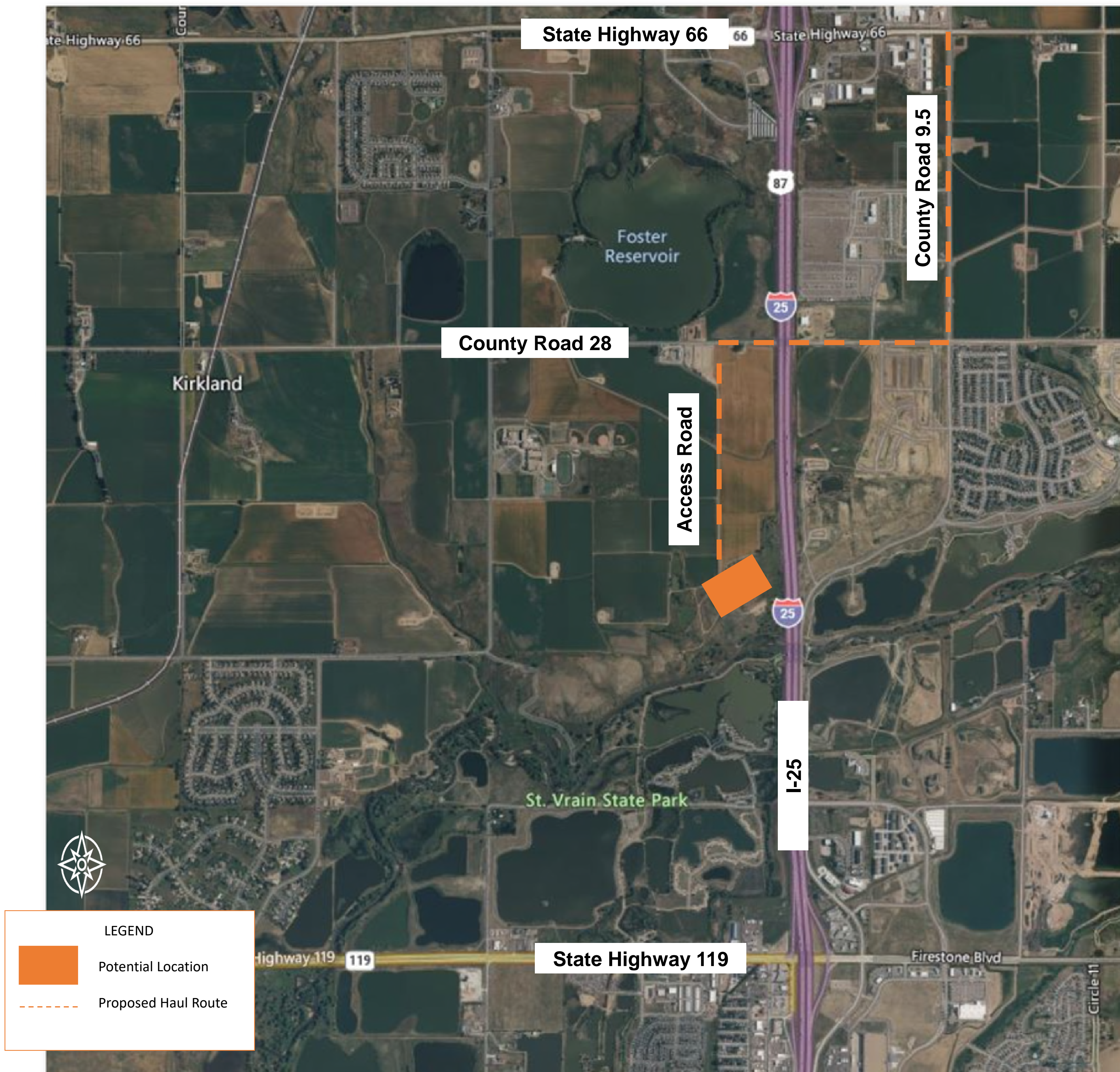


# New Energy Development

## MIDWEST OIL AND GAS DEVELOPMENT PLAN (OGDP)



LEAD WITH PASSION • OUTPERFORM EXPECTATIONS  
DELIVER RESULTS RESPONSIBLY • UNLEASH OPPORTUNITIES  
COMMIT TO GOOD



# Good Neighbor Commitment

## NOISE



We use upgraded drilling rigs with noise-reducing features and quiet hydraulic fracturing technology. These features reduce the noise from our operations.

## LIGHT



We use light-emitting diode (LED) lights strategically oriented away from homes, making our operations less visible to our neighbors.

## ODOR



To counteract any potential hydrocarbon odor during our drilling operations, we use low-aromatic, synthetic drilling fluid.

## DUST



We work to mitigate dust by applying dust suppression to the roads as needed. Various techniques include installing tracking pads and sediment traps, hydro mulching and/or hydroseeding topsoil piles, seeding disturbed soils, and placing and compacting a gravel layer on the working pad surfaces and access roads.

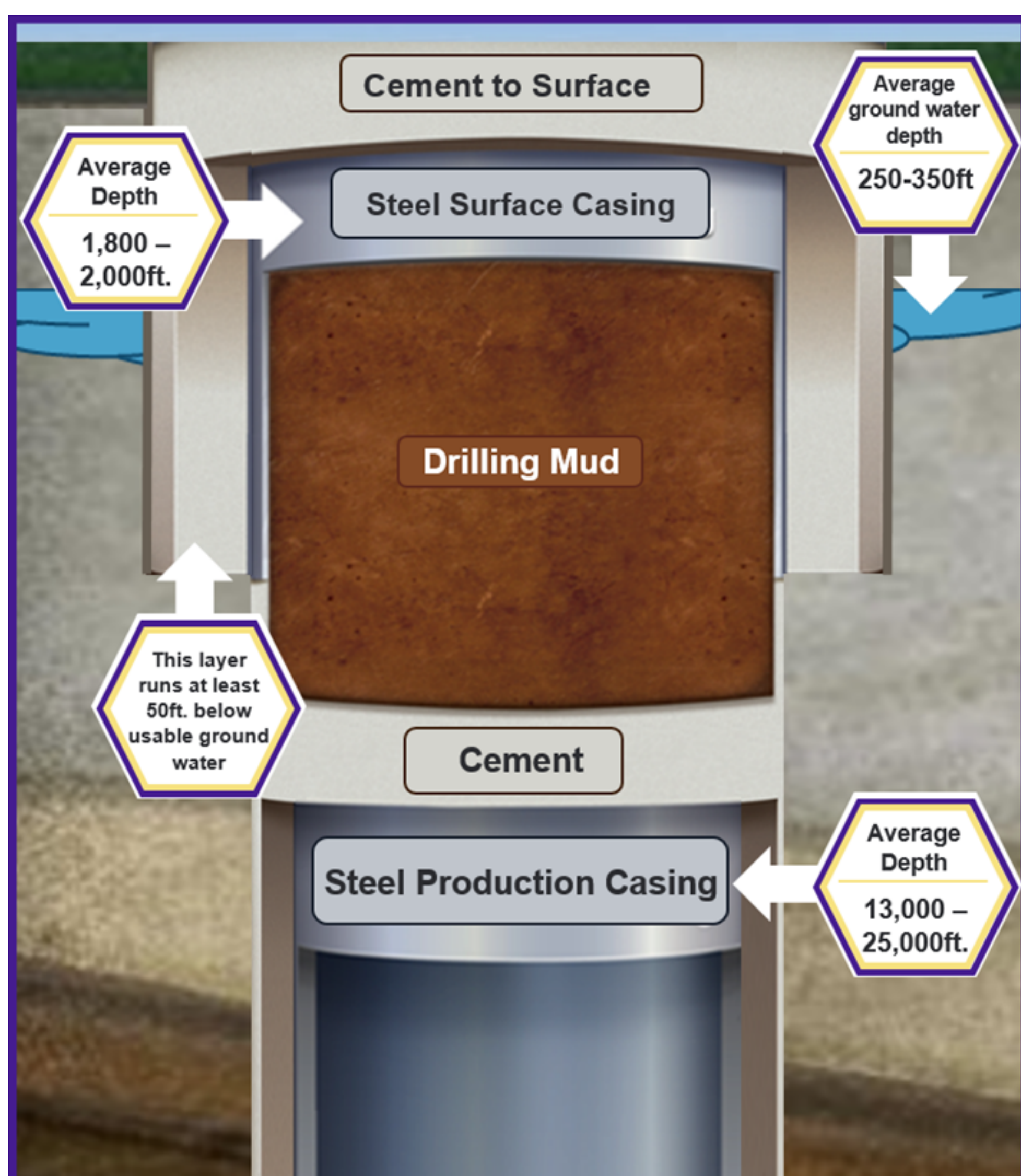
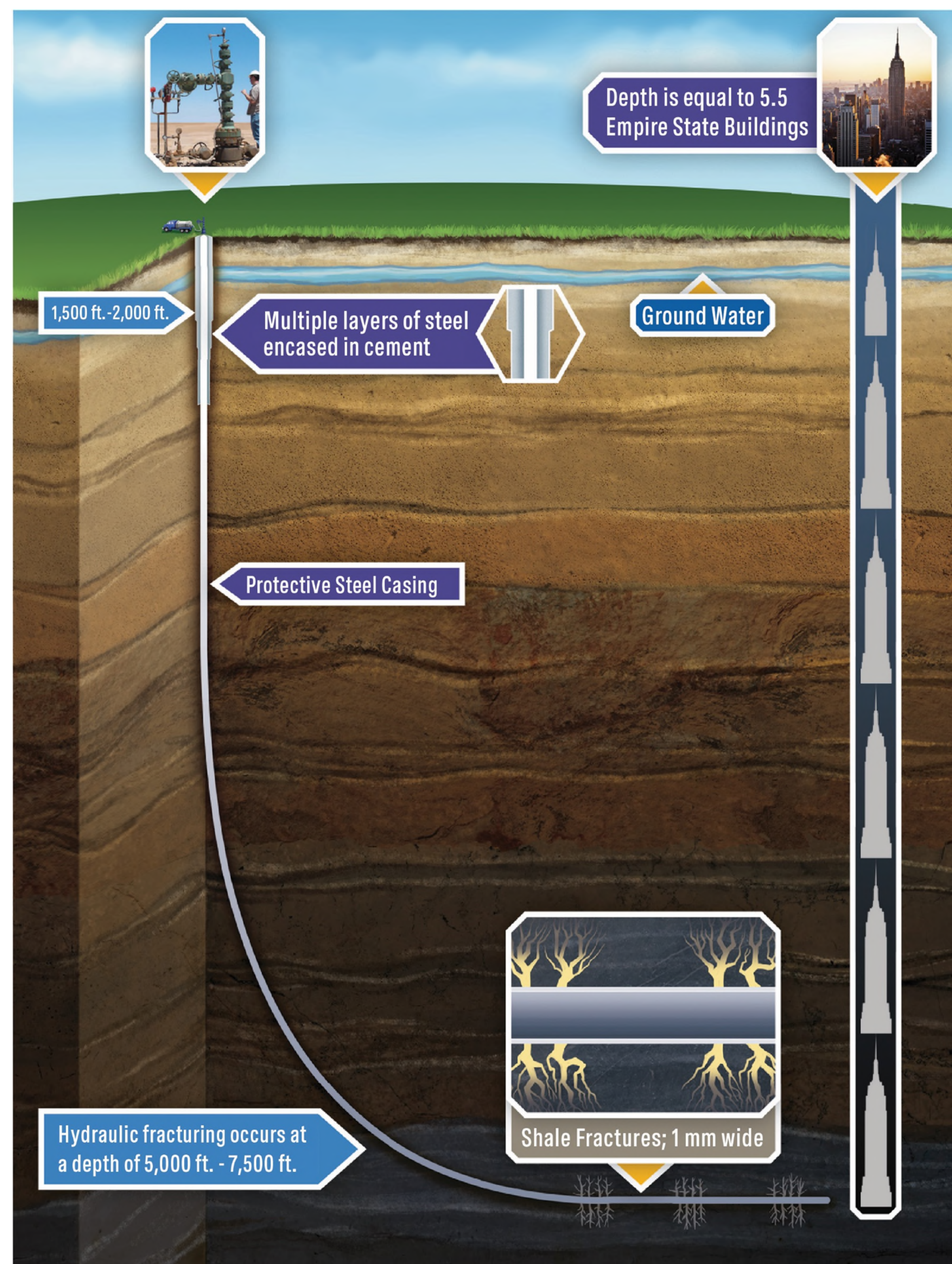
# Horizontal Drilling

## UNDERGROUND ACTIVITY

A production rig arrives and drills to a depth of 7,000 to 8,000 feet.

The horizontal portion of the wellbore can extend more than 2 miles.

Horizontal drilling takes approximately 4-6 days per well.



## PROTECTIVE STEEL CASING

Additional layers of protective steel casing and cement are installed.

# Completions

Well completions consists of hydraulic fracturing, flowback, well clean-out and tubing installation. Completions takes approximately 4-6 days per well.

**Hydraulic Fracturing:** A safe, highly engineered technology developed in the 1940s. Fluid is pumped over a mile below the earth's surface under pressure to create hairline fractures in the rocks.



We transport the water used in hydraulic fracturing through our innovative “Water On Demand” pipeline system.

**Flowback:** After fracturing, the wells are opened, and oil and gas flow into the mobile production facility.

**Well clean-out and Tubing:** The wells are cleaned out to remove excess sand and install the production tubing.









