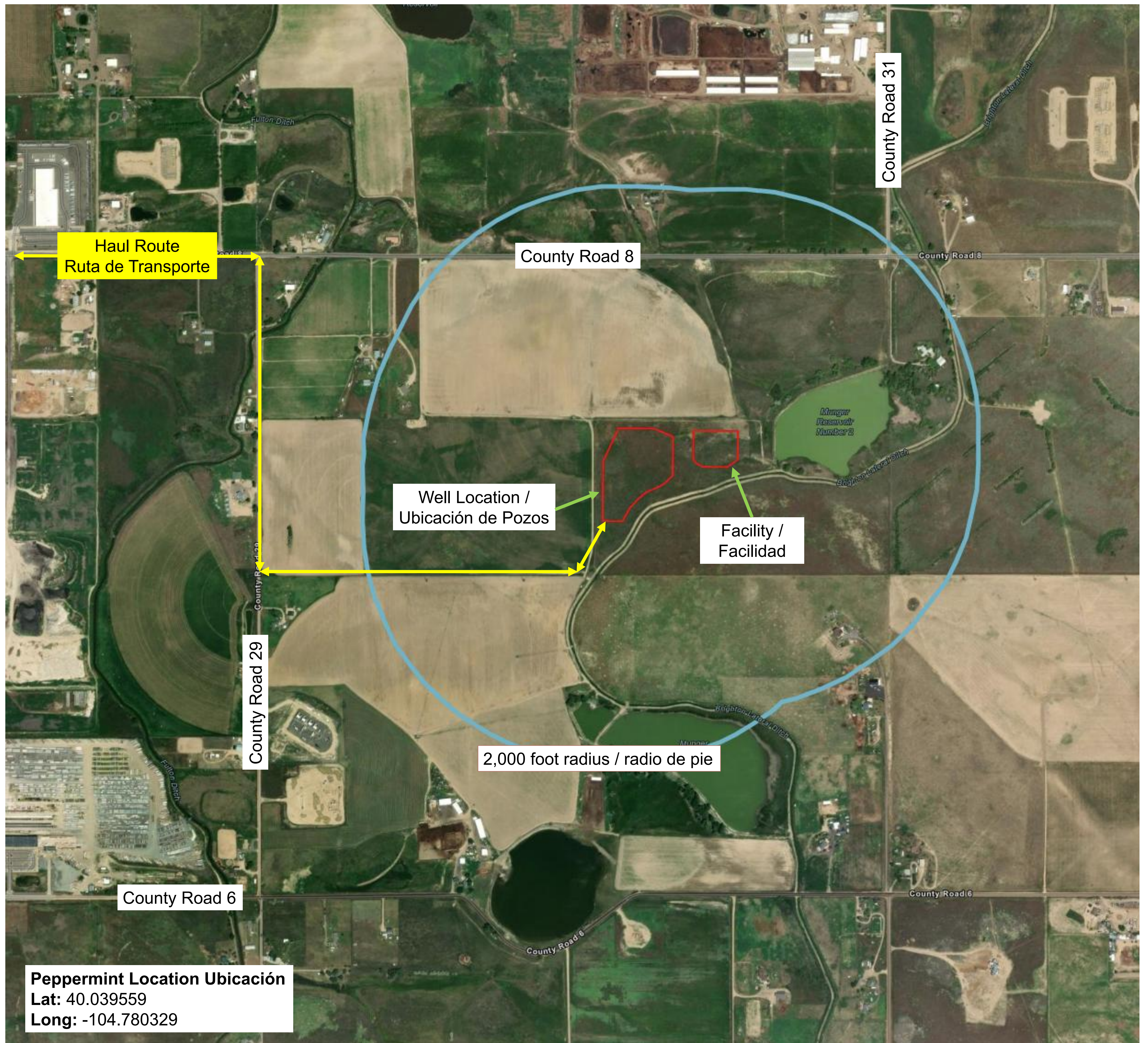


New Energy Development Desarrollo de Nuevas Energías

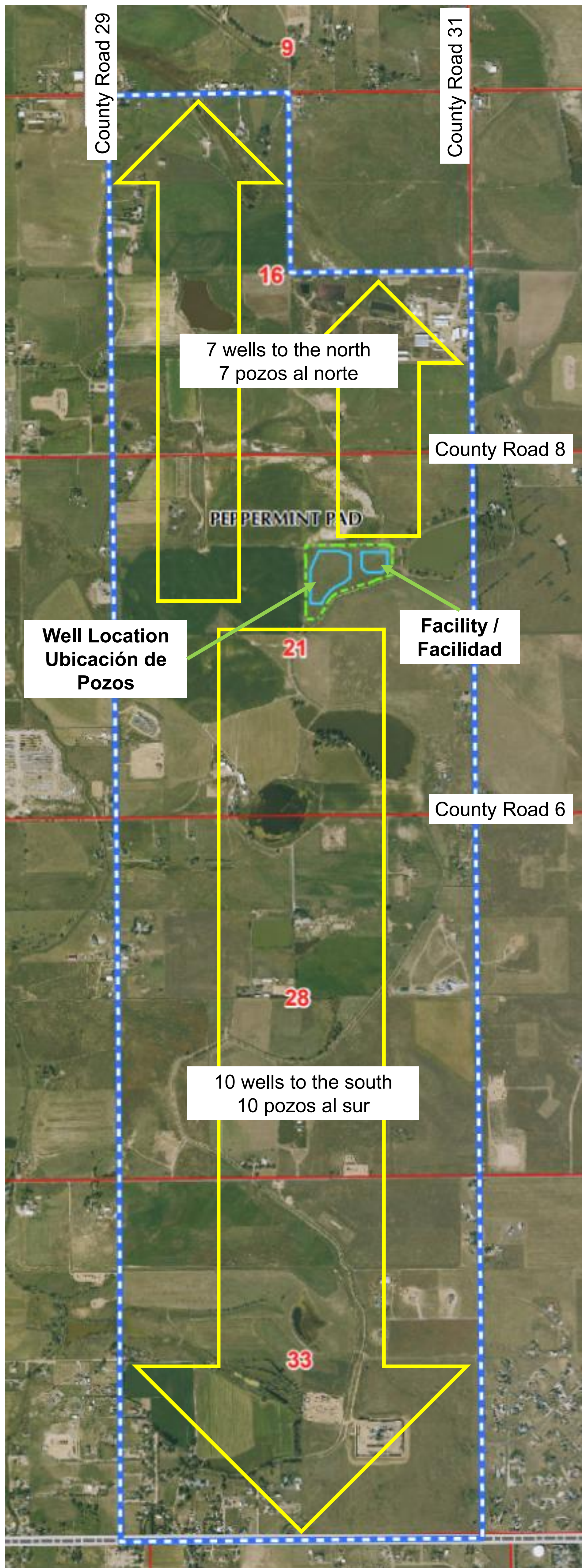
Peppermint Oil and Gas Location / Ubicación de petróleo y gas



LEAD WITH PASSION • OUTPERFORM EXPECTATIONS
DELIVER RESULTS RESPONSIBLY • UNLEASH OPPORTUNITIES
COMMIT TO GOOD



New Energy Development Desarrollo de Nuevas Energías



Project Overview

- We will submit the State and Weld County applications in June 2026
- Estimated construction start June 2027
- Estimated drilling start September 2027
- 17 Horizontal wells ~127 days of drilling
- Construction area: 20.52 acres
- Operations area: 6.68 acres

Resumen del Proyecto

- Presentaremos las solicitudes ante el Estado y el Condado de Weld en junio de 2026
- Inicio estimado de la construcción en junio de 2027
- Inicio estimado de la perforación en septiembre de 2027
- 17 pozos horizontales ~127 días de perforación
- Área de construcción 20,52 acres
- Área de operaciones 6,68 acres

Location in / Ubicación en Fort Lupton



Timeline and Location Cronología y Ubicación

Estimated Timeline / Cronograma Estimado

10 South Wells / 10 Pozos del Sur	Phase / Fase	Work Activity / Actividad Laboral	Estimated Start / Inicio Estimada	Estimated End / Finalizacion Estimada
	1	Pad Construction - Construcción de la plataforma	6/2027	8/2027
	2	Surface Casing - Revestimiento de superficie	8/2027	8/2027
	3	Horizontal Drilling - Perforación horizontal	9/2027	11/2027
	4	Well Completions - Terminaciones de pozos	12/2027	3/2028
	5	Production Facility Construction - Construcción de instalaciones de producción	11/2027	2/2028
7 North Wells / 7 Pozos del Norte	Phase / Fase	Work Activity / Actividad Laboral	Estimated Start / Inicio Estimada	Estimated End / Finalizacion Estimada
	2	Surface Casing - Revestimiento de superficie	6/2029	6/2029
	3	Horizontal Drilling - Perforación horizontal	7/2029	8/2029
	4	Well Completions - Terminaciones de pozos	10/2029	12/2029
	6	Interim Reclamation - Rehabilitación provisional	12/2029	3/2030



Construction / Construcción



Drilling / Perforación

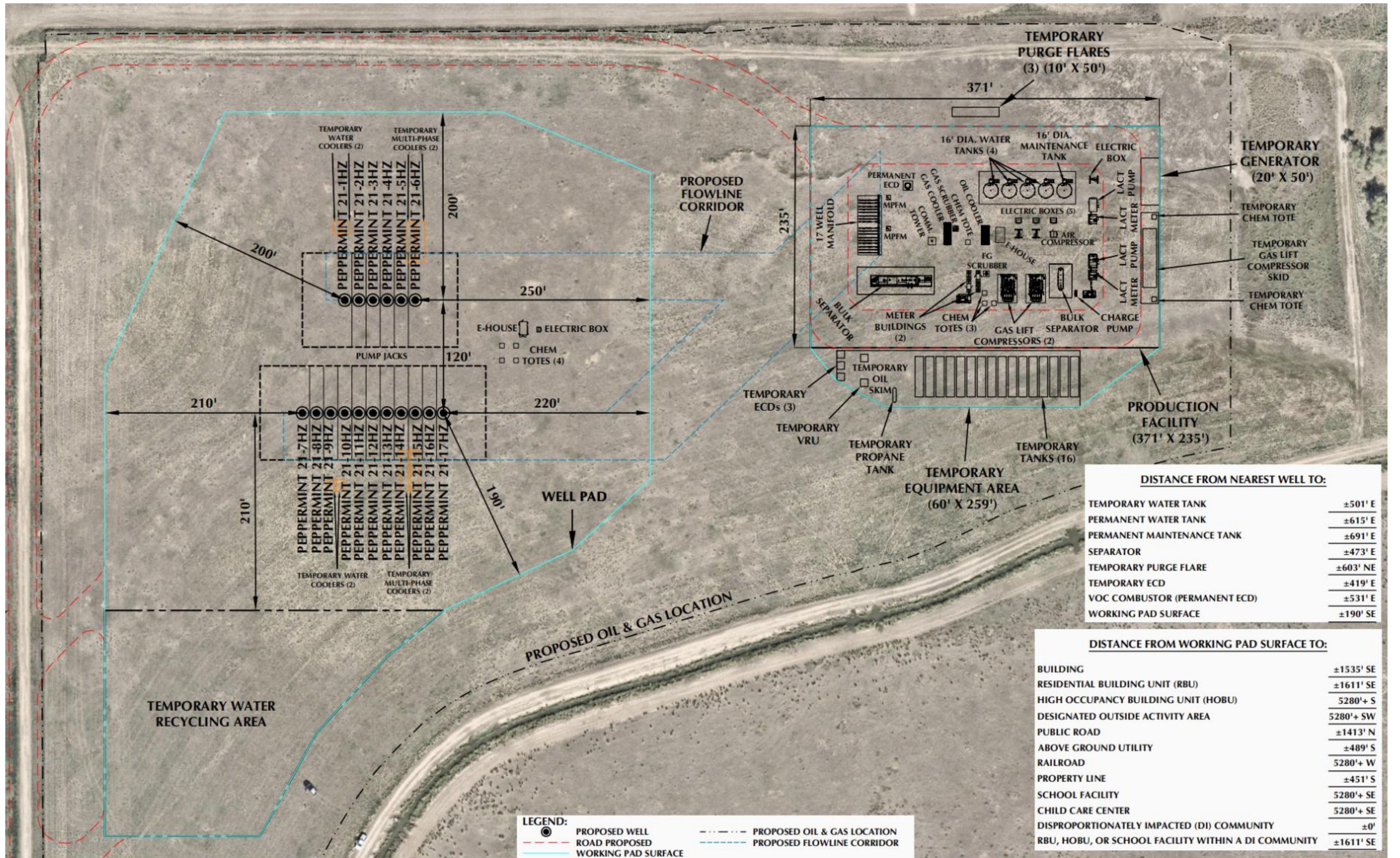


Completions / Finalizaciones

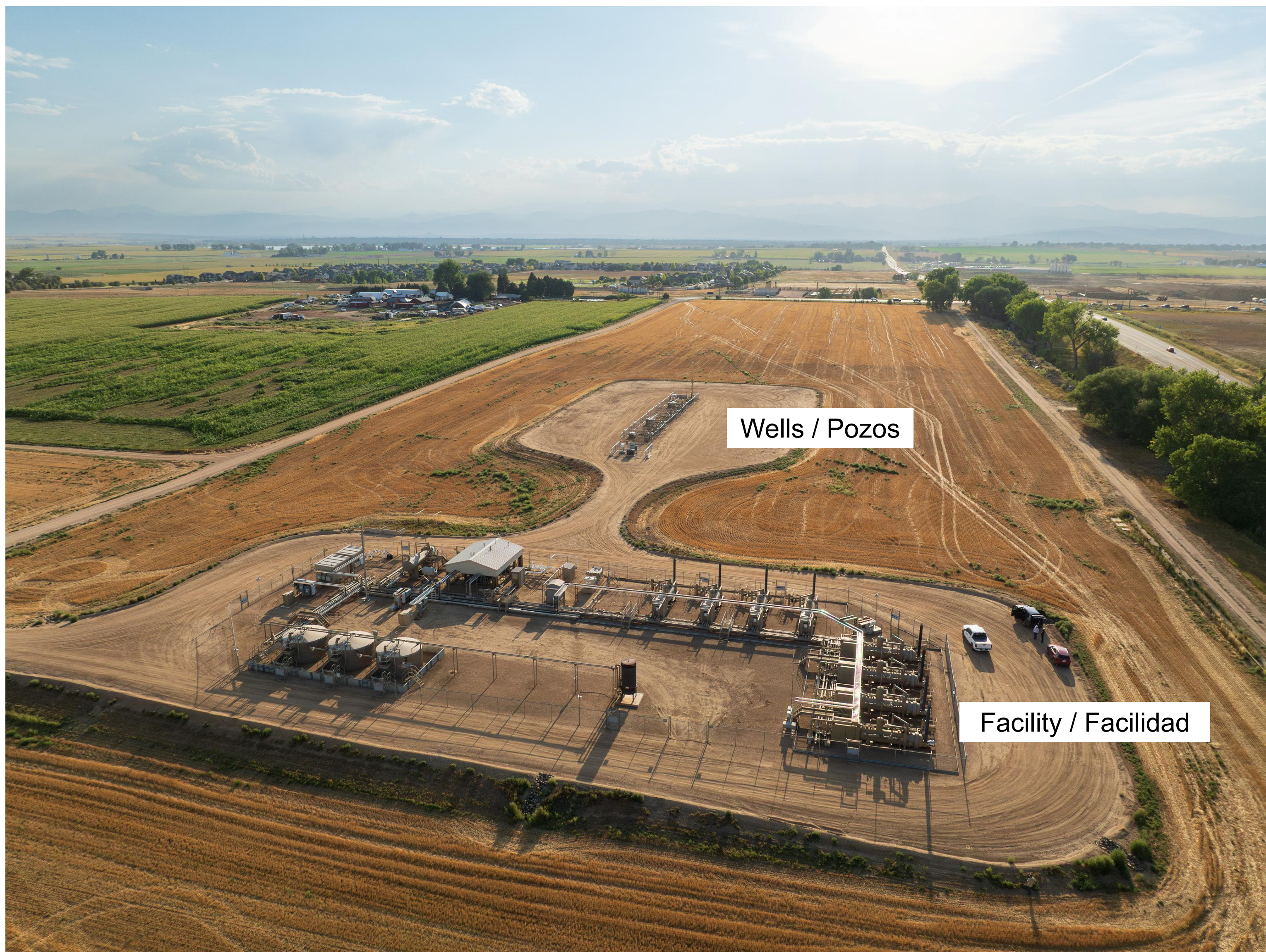


Operations / Operaciones

Site Layout Diseño del Sitio



Example Existing Location – Ejemplo de Ubicación Existente



LEAD WITH PASSION • OUTPERFORM EXPECTATIONS
DELIVER RESULTS RESPONSIBLY • UNLEASH OPPORTUNITIES
COMMIT TO GOOD



Good Neighbor Commitment

NOISE



We use upgraded drilling rigs with noise-reducing features and quiet hydraulic fracturing technology. These features reduce the noise from our operations.

LIGHT



We use light-emitting diode (LED) lights strategically oriented away from homes, making our operations less visible to our neighbors.

ODOR



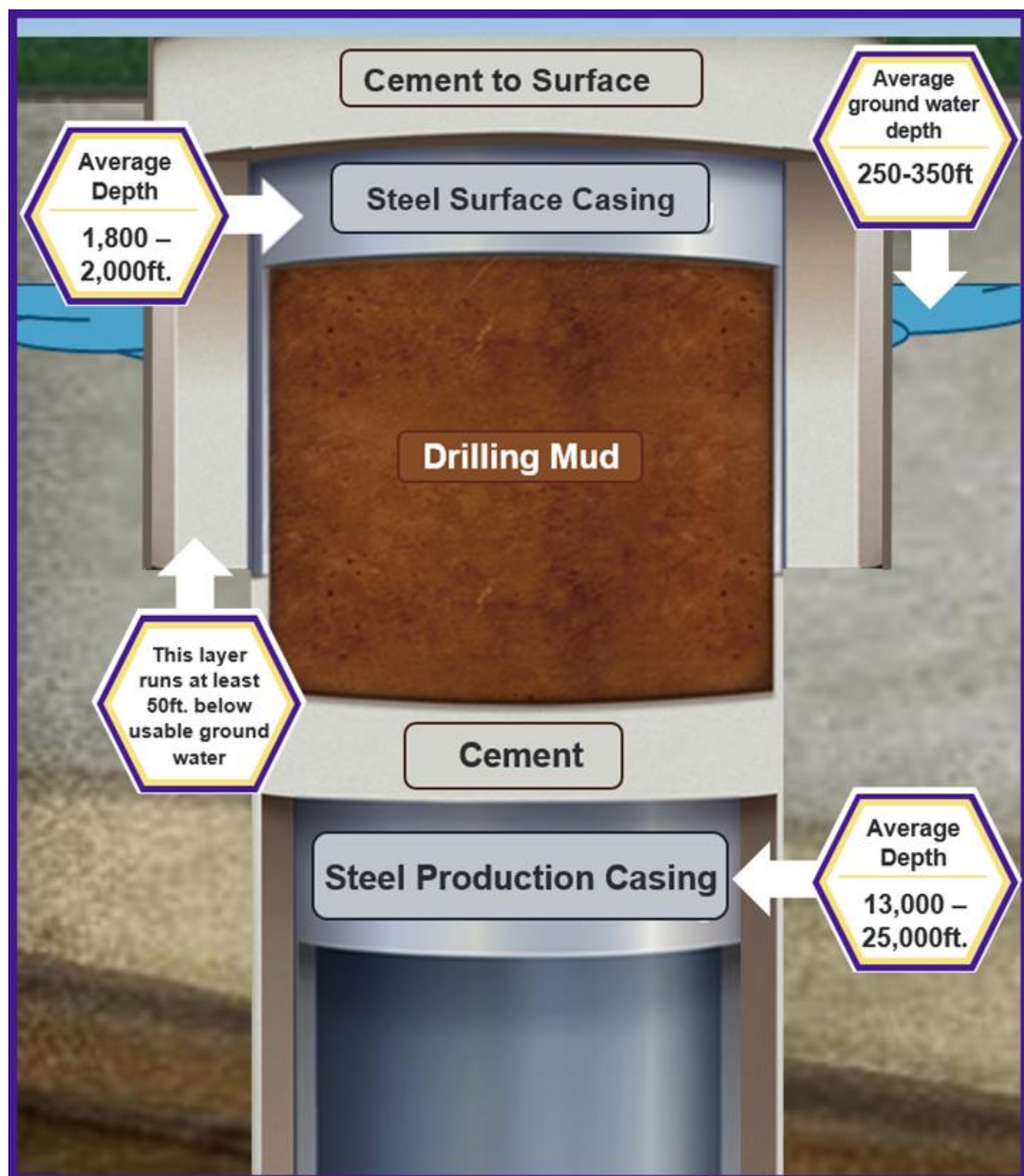
To counteract any potential hydrocarbon odor during our drilling operations, we use low-aromatic, synthetic drilling fluid.

DUST



We work to mitigate dust by applying dust suppression to the roads as needed. Various techniques include installing tracking pads and sediment traps, hydro mulching and/or hydroseeding topsoil piles, seeding disturbed soils, and placing and compacting a gravel layer on the working pad surfaces and access roads.

Horizontal Drilling



PROTECTIVE STEEL CASING

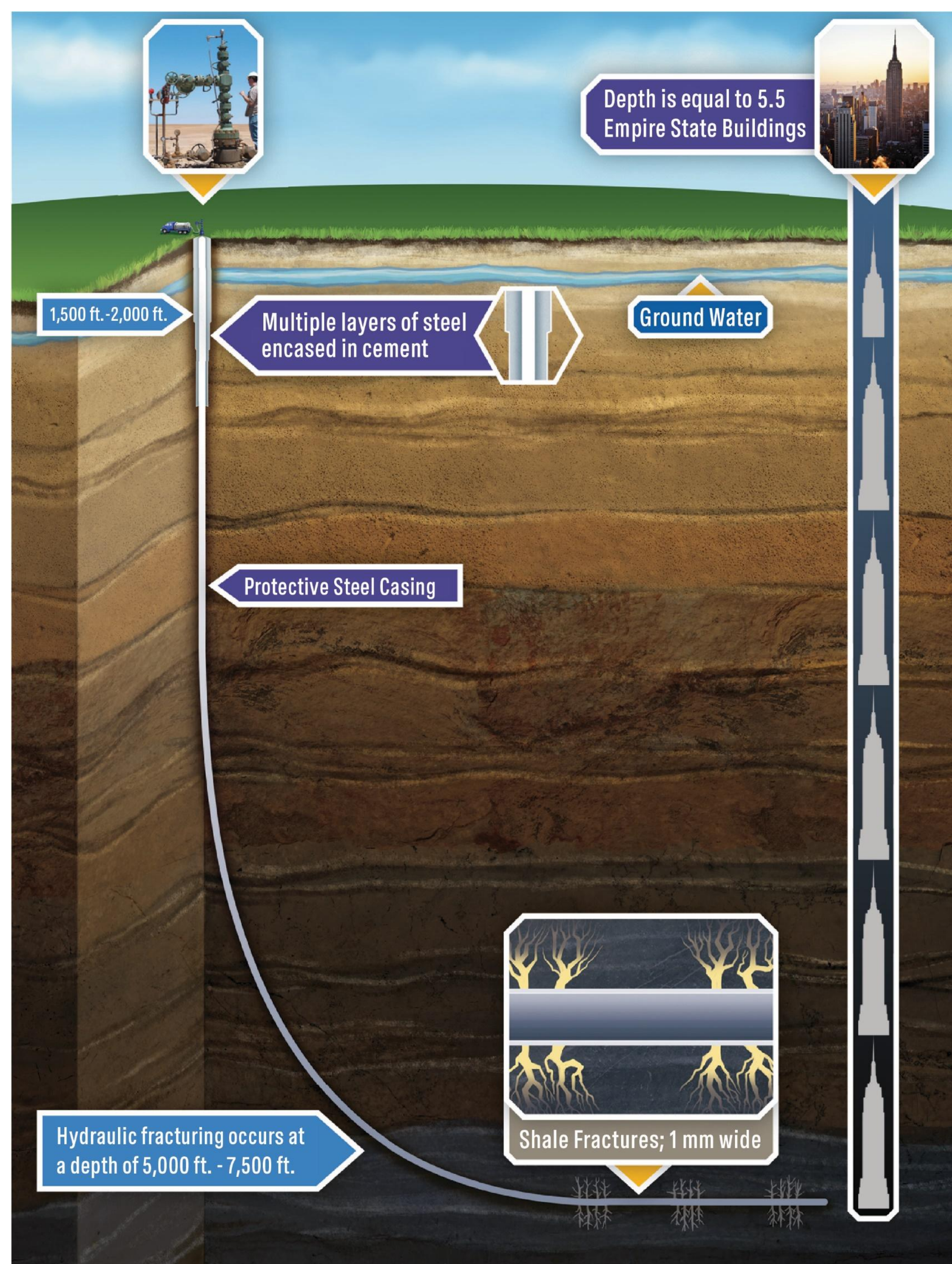
Additional layers of protective steel casing and cement are installed.

UNDERGROUND ACTIVITY

A production rig drills vertically to a depth of 7,000 to 8,000 feet.

The horizontal portion of the wellbore can extend more than 3 miles.

Horizontal drilling takes approximately 4-6 days per well.



Completions

Well completions consists of hydraulic fracturing, flowback, well clean-out and tubing installation. Completions takes approximately 4-6 days per well.

Hydraulic Fracturing: A safe, highly engineered technology developed in the 1940s. Fluid is pumped over a mile below the earth's surface under pressure to create hairline fractures in the rocks.



We transport the water used in hydraulic fracturing through our innovative “Water On Demand” pipeline system.

Flowback: After fracturing, the wells are opened, and oil and gas flow into the mobile production facility.

Well clean-out and Tubing: The wells are cleaned out to remove excess sand and install the production tubing.

